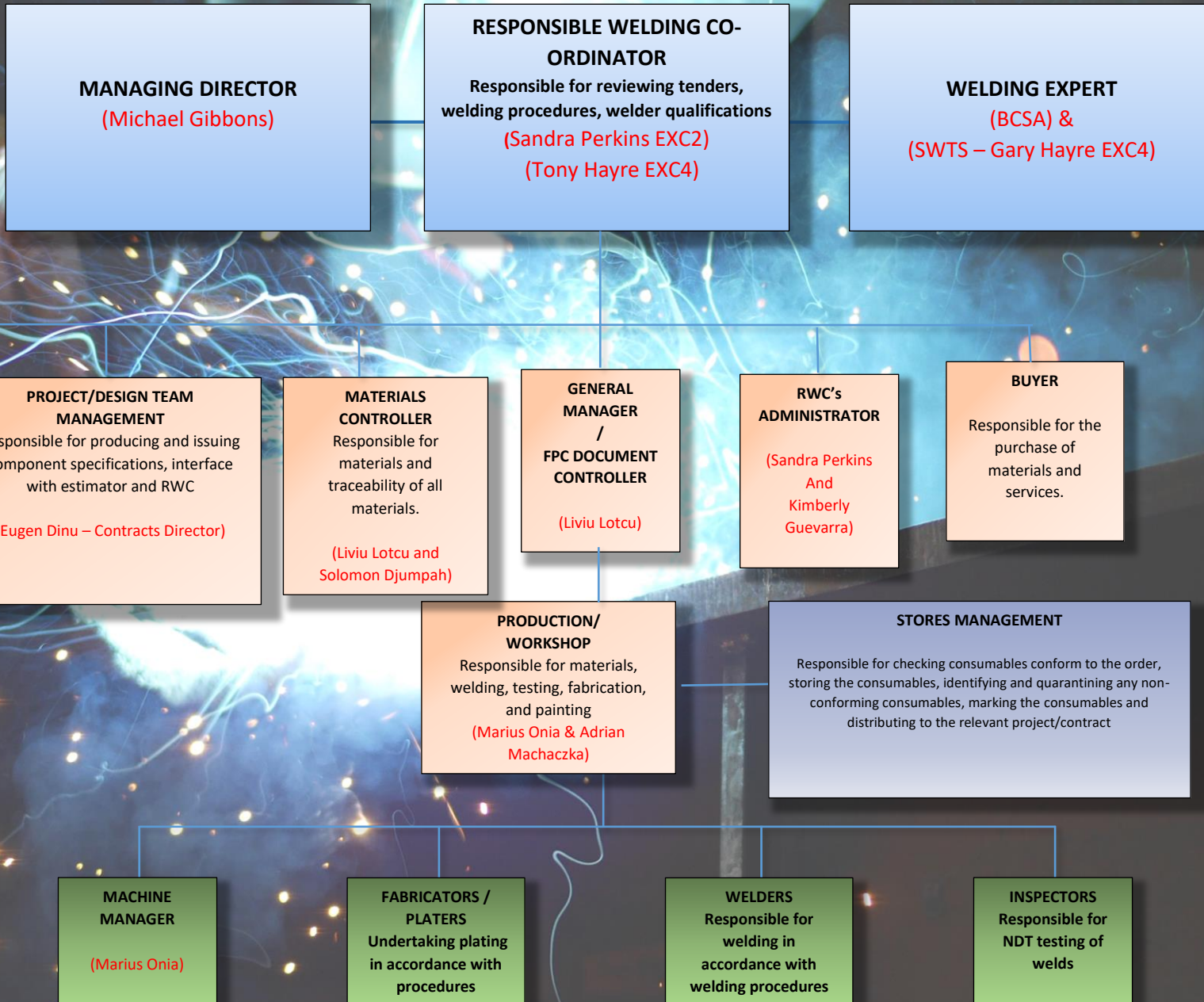


ASME WELDING CO-ORDINATION ORGANISATION MODEL



ESTIMATORS
Responsible for tenders, interface with design.

(Nigel Levis – Commercial Director)

PROJECT/DESIGN TEAM MANAGEMENT
Responsible for producing and issuing component specifications, interface with estimator and RWC

(Eugen Dinu – Contracts Director)

MATERIALS CONTROLLER
Responsible for materials and traceability of all materials.

(Liviu Lotcu and Solomon Djumpha)

GENERAL MANAGER / FPC DOCUMENT CONTROLLER

(Liviu Lotcu)

RWC's ADMINISTRATOR

(Sandra Perkins And Kimberly Guevarra)

BUYER
Responsible for the purchase of materials and services.

PRODUCTION/ WORKSHOP
Responsible for materials, welding, testing, fabrication, and painting

(Marius Onia & Adrian Machaczka)

STORES MANAGEMENT
Responsible for checking consumables conform to the order, storing the consumables, identifying and quarantining any non-conforming consumables, marking the consumables and distributing to the relevant project/contract

MACHINE MANAGER

(Marius Onia)

FABRICATORS / PLATERS
Undertaking plating in accordance with procedures

WELDERS
Responsible for welding in accordance with welding procedures

INSPECTORS
Responsible for NDT testing of welds